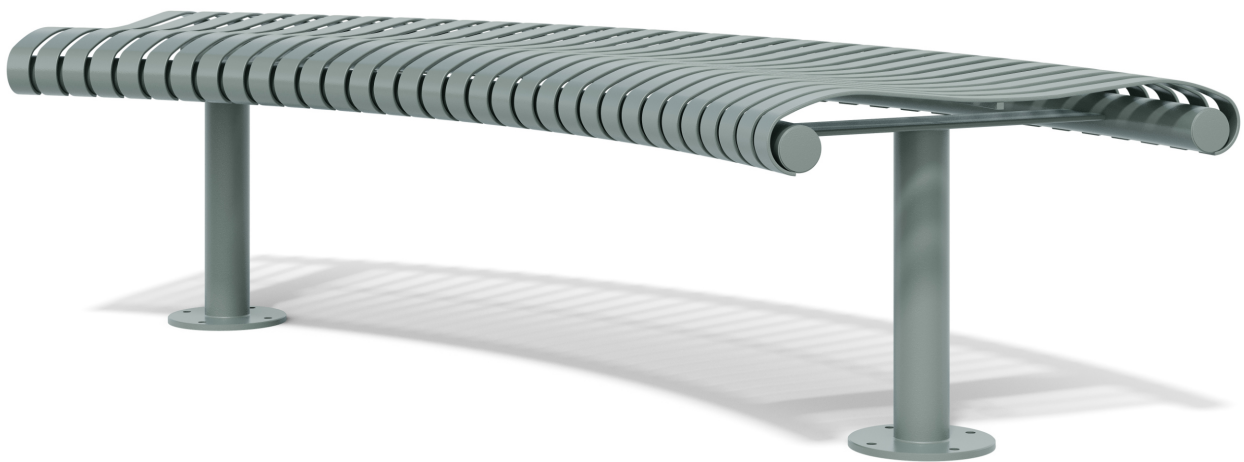


CURVED BENCH

Designer: SPARK - Richard Haynes



SLAT OPTIONS

- Hot dip galvanised mild steel

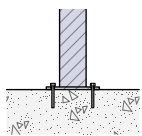
FRAME OPTIONS

- Hot dip galvanised mild steel

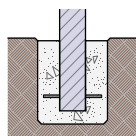
FINISHES

- Galvanised
- Powdercoated

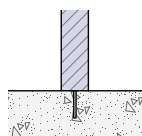
INSTALLATION



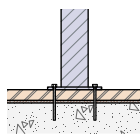
Bolt Down



In Ground



Concealed Fix



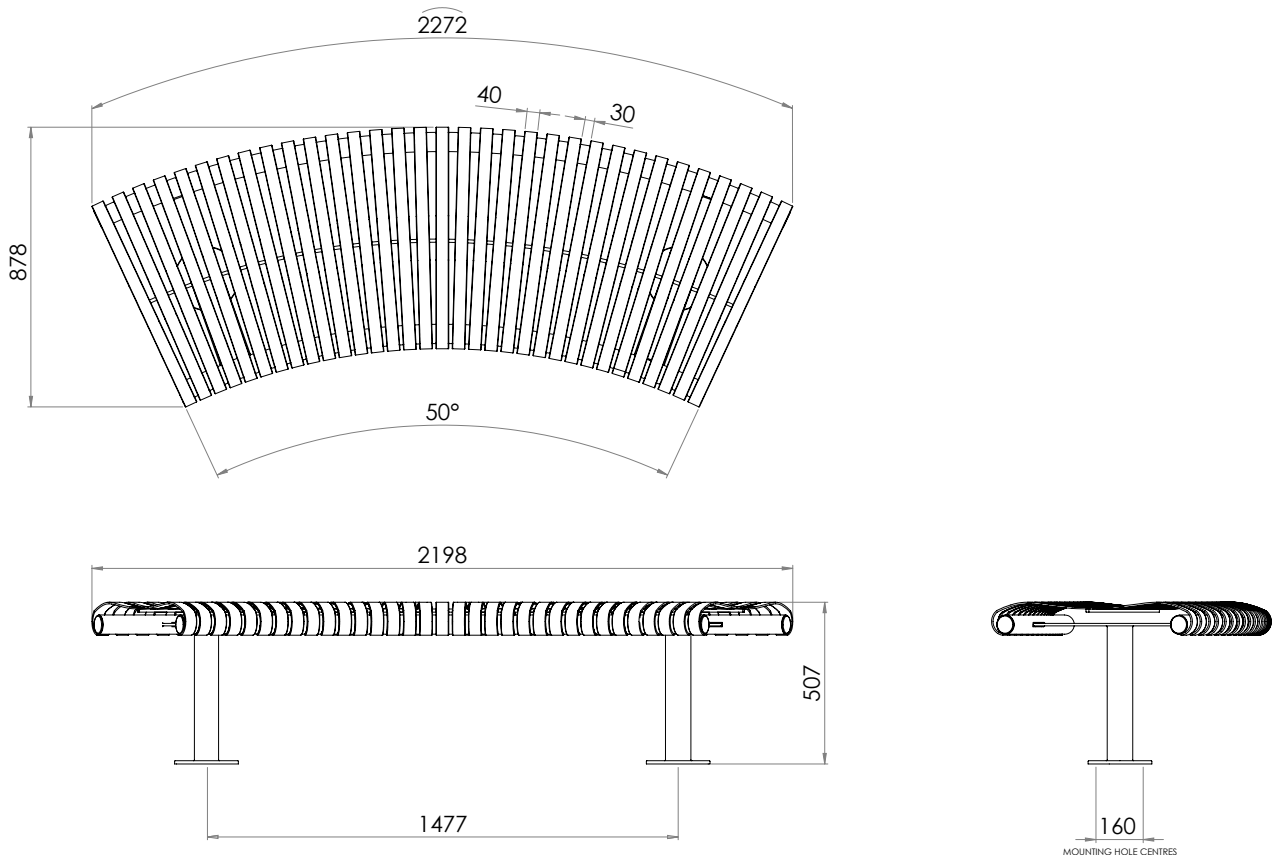
Bolt Through

FIXINGS

- 12mm fixings for 14mm diameter holes

PARADE CURVED BENCH

SPECIFICATIONS



All measurements are in millimetres. Drawings are not to scale

PRODUCT CODE	FRAME & SLAT OPTION	SLAT OPTION & SIZE (mm)
PDE002-HDG-GV-S-22R18	Galvanised	40x8 Galvanised
PDE002-HDG-PC-S-22R18	Powdercoated	40x8 Powdercoated